

DrillVision Maximus Bullet Camera

Hazardous Area C1D1 5 MP IP Bullet Camera w/ Motorized Optical Zoom
Stainless Steel 304 Housing



- **Video Camera for industrial applications.**
- **5MP Sensor.**
- **Motorized Optical Zoom**
- **Stainless Steel Enclosure.**
- **IP Ready Camera.**
- **PoE or 12 V DC Please specify.**
- **Class 1 Division 1 Groups B, C, & D, T6.**

This IP Network Bullet Camera is specially designed to operate in industrial hazardous environments.

The camera incorporates a high definition, 5 megapixel CMOS visual sensor with outstanding low- light performance. This camera module has a motor-driven optical zoom. The zoom functions can be controlled automatically and precisely from anywhere using the click-to-point and preset view features of the camera management software.

The Maximus Bullet Camera is a high performance low-light camera that automatically switches to black and white and removes an IR cut filter to increase sensitivity in low light conditions.

Manufactured with a rugged stainless-steel enclosure, the camera is certified for use in hazardous industrial environments that may contain combustible materials.

Be sure to specify PoE or 12 VDC power.

DrillVision™

Onshore, Offshore, Facilities, Pipelines

A Southern Electronics Company

2301 Julia St.
New Orleans, LA 70119
225.753.8884

www.drillvisionsystems.com

SPECIFICATIONS

Imager	1/2.8" Progressive Scan CMOS
Shutter	1 to 1/100,00 seconds
Min Illumination	Color: 0.005 Lux 0 Lux with IR on to 50m
View Angle	31° - 99°
Focal Length	2.7 – 13.5 mm
Protocols	TCP/IP, HTTP, FTP, SMTP, 802.1x, ONVIF
Ethernet	100Base-TX/10BaseT (RJ-45)
Compression	M-JPEG, H.264
Resolution	2592 x 1944p, 1920x1080p
Frame Rate	30 FPS
Voltage Required	PoE (802.3af), 12VDC, 24VDC
Power Consumption	8.5W Max
Weight	26 lbs.
Operating Temperature	-30° C to 60° C
Dimensions	6.7" H x 6.7" W x 9.09" L (with Sunshield)
Mount	Wall mount standard
Enclosure	E1407
Enclosure Rating	NEMA 4X
Certifications	Class I Division 1, Groups B, C & D, T6

OPTIONAL ACCESSORIES

- Enclosure Sunshield
- IEEE PoE Injector
- Pole Mount Kit
- Corner Mount Kit

DrillVision™

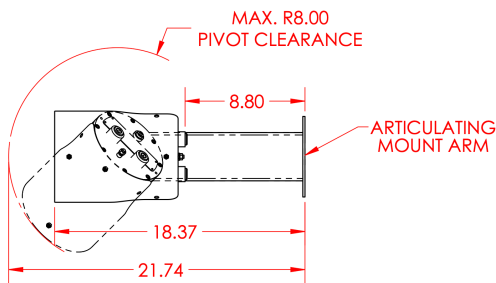
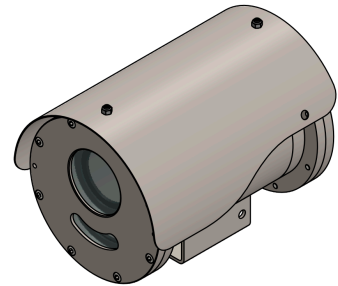
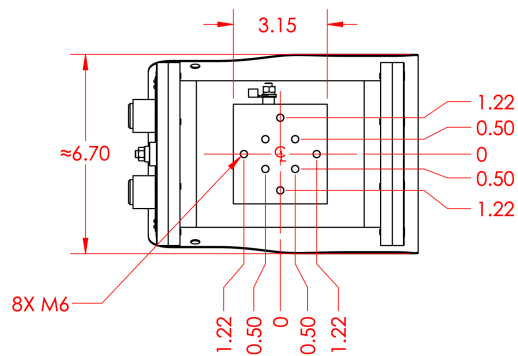
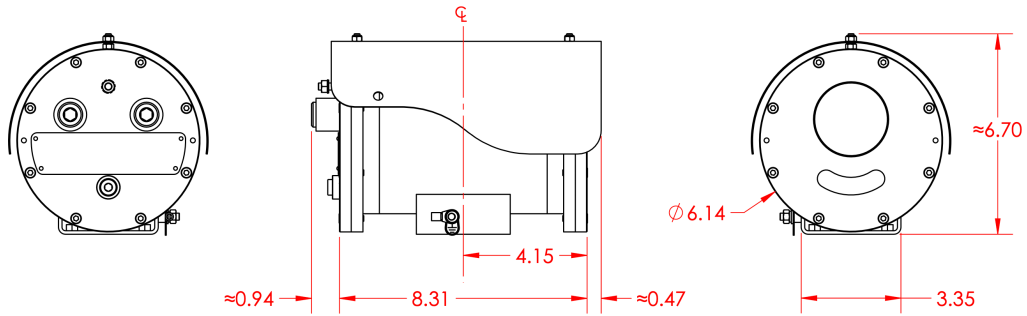
Onshore, Offshore, Facilities, Pipelines

A Southern Electronics Company

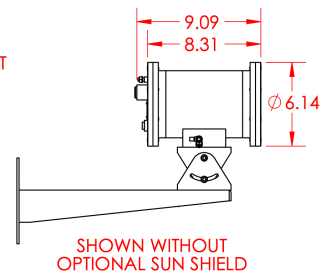
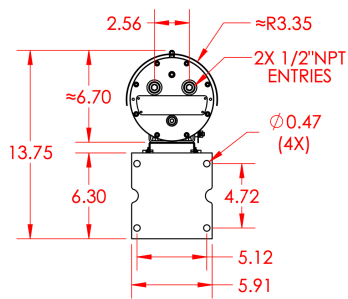
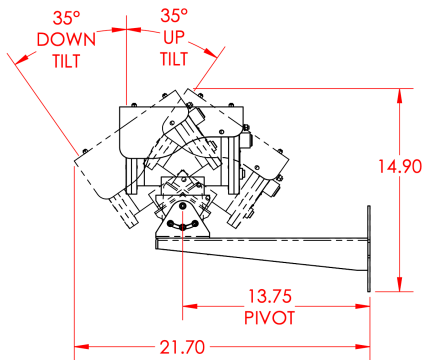
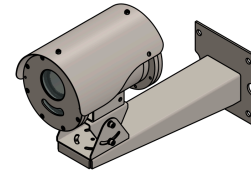
2301 Julia St.
New Orleans, LA 70119
225.753.8884

www.drillvisionsystems.com

Dimensions & Mounting



REVISIONS			
NO.	DESCRIPTION	DATE	BY APP.
0	ISSUE		



DrillVision™

Onshore, Offshore, Facilities, Pipelines

A Southern Electronics Company

2301 Julia St.
New Orleans, LA 70119
225.753.8884

www.drillvisionsystems.com