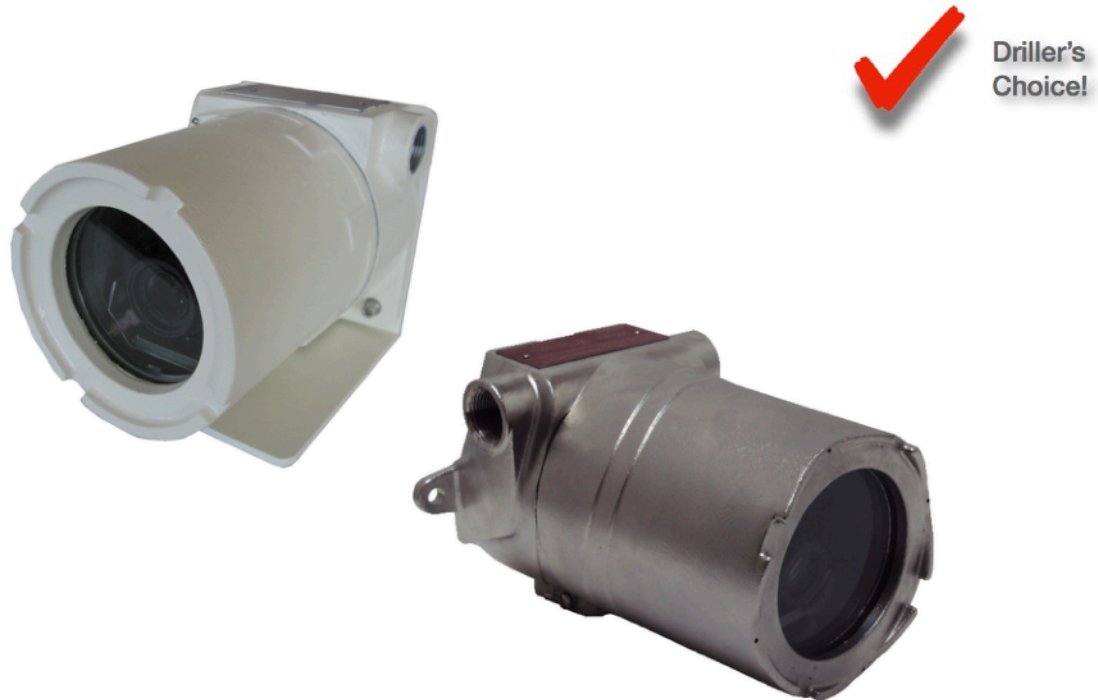


Rugged 4x 3MP Color Video Camera

EX-PROOF MEGA-PIXEL IR CAMERA IN COMPACT DESIGN



This camera is a high quality, 3 mega pixel color video camera. The compact design provides 4x motor-driven optical zoom and delivers HD video, up to 30 frames per second. The zoom functions can be controlled automatically and precisely from anywhere using the features of DrillVision's camera management software. In addition, the camera has a wide dynamic range to increase sensitivity and improve images in varying lighting conditions.

The camera is housed in an explosion proof enclosure rated for Class I Division 1 and ATEX Zone 1 environments. The camera is ready for mounting, requiring 24 VAC or 12 VDC power and an IP connection. A PoE version is also available. Wall mount arm is provided. Other mounting options are available. The camera is available in painted aluminum or 316 stainless. Please specify options.

Features

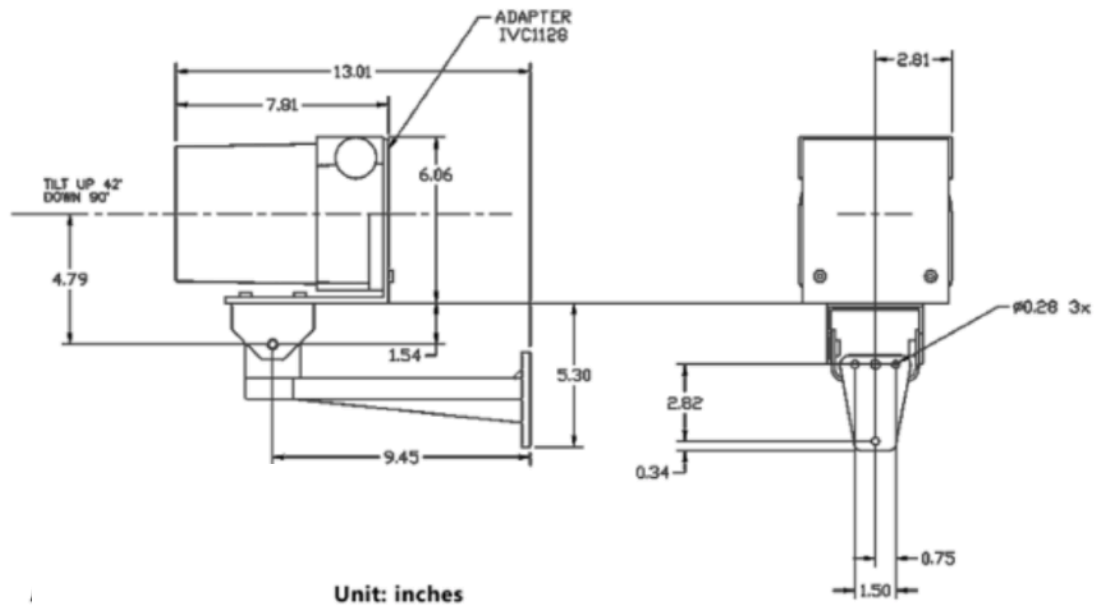
- Explosion-proof
- Class 1, Division 1 Rated
- ATEX Zone 1
 - II 2 GD Ex db IIC T6 Gb
 - II 2 GD Ex tb IIIC T80°C Db IP66
 - $-20^{\circ}\text{C} \leq \text{Ta} \leq 60^{\circ}\text{C}$
- Increased operator awareness.
- 24 VAC, 12 VDC, PoE
- 4x Optical Zoom
- 3 Mp Resolution
- Rugged Weatherproof
- Low Light with IR Filter
- Day/ Night Switching
- Vibration Dampening Mechanism
- Camera Swivel Clutch System
- Auto & Manual Focus

Specifications

Imager	Sony 1/2.8" 3.23 Megapixel Progressive Scan CMOS
Resolution	2048(H) x 1536(V) approx. 3.15M pixels
Shutter	1 to 1/10,000 Seconds
Minimum Illumination	Color: 0.15 lx at 50IRE/30fps B/W: 0.09 lx at 50IRE/30fps
WDR	Digital WDR (ATR-EX)
Image Features	Auto Exposure, Auto White Balance, Auto and Manual Iris, Back Light Compensation
Focus	Auto
Zoom Ratio	Motorized 4.2x
View Angle	H103° x V74.4° ~ H30.8° x V23.3°
Focal Length	2.8-12mm
F-number	1.4 ± 5%
Network	10/100 BASE-T (RJ-45)
Frame Rate	30 FPS
Compression	H.264, MJPEG
Protocols	TCP/IP, HTTP, FTP, SMTP
Weight	8.1 lbs. (Aluminum Enclosure) 10.2 lbs. (Stainless Steel Enclosure)

Voltage Required	(See ordering information)
Power Consumption	1.2A @ 12 VDC 0.3A @ 48 VDC (PoE)
Operating Temperature	-10° to 60° C (PoE version)
Dimensions	5.50" H x 5.50" W x 7.75" D (Aluminum) 5.50" H x 5.50" W x 8" D (Stainless Steel)
Mount	Wall Mount Standard
Protection Class	NEMA Type 4x, IP66
Regulatory Approvals	
Safety	Conforms to UL STD 61010-1 + UL1203 Certified to CSA STD CSA22.2 NO.30 + CAN/CSA C22.2 No. 25 EN 60079-0:2012+A11:2013, EN 60079-1:2014 and EN 60079-31:2014 ATEX 2014/34/EU.
Hazardous Area	Class I, Division 1, Groups B-D Class II, Division 1, Groups E-G II 2 GD Ex db IIC T6 Gb II 2 GD Ex tb IIIC T80°C Db IP66 -20°C ≤ Ta ≤ 60°C

Dimensions



Product Accessories:

DrillVision™. C1D1 Power Supply

DrillVision™ VMS Software (DrillVision, MarineVision & CraneVision Versions)

DrillVision™. Micro PC

DrillVision™. C1D2 Touchscreen Monitors

Stainless Steel

Class 1, Div 2 rated

15", 17", 19", 19.5", 22", 23" LCD

